



## MARCH NEWS

As we draw to the end of another busy week I would like to say a huge thank you to Mrs Walker for delivering her Maths Mastery Workshops for Reception, Year 1 and Year 2 this week. Currently Mrs Walker is studying for her NPQ in Maths and has been working with NCETM for many years now.

The Maths Mastery Parent and Children workshops were very well attended by parents. Thank you for your participation and engagement – it is very much appreciated.

The school is currently working towards an RE award - Tiger class went to the Methodist Church this week and had a fantastic time there and Lion Class visited Holy Trinity Church too.

Thank you to Mrs Lomax also for organising a humanist visitor to talk to the children in Zebra Class recently.

Have a lovely weekend.

Mr Anscombe



### INSIDE THIS ISSUE

School Attendance ....	2
Tiger Class show	
Assembly .....	3
Biggest Ever Girls	
Football Session.....	3
World Book Day.....	4
Easter Disco .....	5
FoLS Update.....	5
KM My Mum.....	5
Science week.....	6
Princess Trust.....	6
Reminders .....	6
Understanding	
Emotional Regulation.	7
Junior Bake Off .....	7
Useful Info.....	8

### Parking on School Site

We are still noticing that a number of parents are still driving onto and parking on school site, can we please remind you that unless you have been given permission (exceptional circumstances only) you must not enter the school site this includes if your child is late for school. It is a safety issue for any the children and adults using the driveway in the mornings and evenings.

**WEEK ENDING FRIDAY 28TH FEBRUARY**

- Panda Class 95%**
- Elephant Class 91.52%**
- Giraffe Class 97.58%**
- Lion Class 92.59%**
- Koala Class 95.83%**
- Tiger Class 100%**
- Zebra Class 93.06%**



**WEEK ENDING FRIDAY 7TH MARCH**

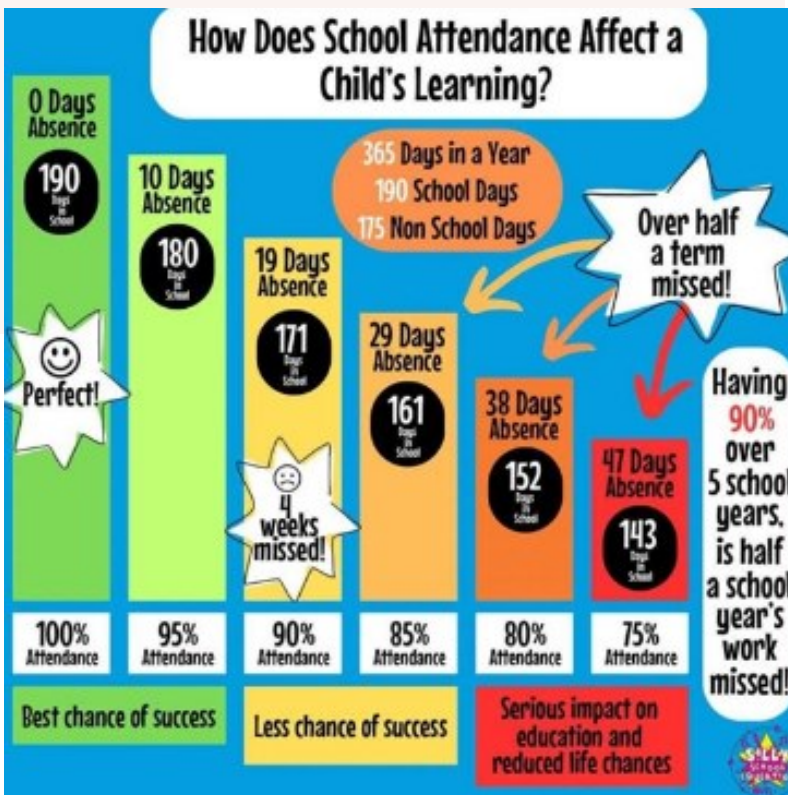
- Panda Class 95.33%**
- Elephant Class 90.71%**
- Giraffe Class 96.77%**
- Lion Class 92.96%**
- Koala Class 99.33%**
- Tiger Class 96.55%**
- Zebra Class 93.7%**

**CLASS WEEKLY ATTENDANCE RESULTS**

**Whole School Attendance Target 97%**

**Whole School Attendance This Week 93.96%**

**Whole School Attendance This Year 95.18%**



## Tiger Class Show Assembly

On Wednesday 5th March Tiger Class treated us to their Show Assembly. They told us all about what they have been studying this year, this included the solar system, the books they have been reading as a class in school; Street child - the story of Jim Jarvis and his ties to Barnardos. Floodland; a story about young girl who is left behind when England is covered by water, and The Matchbox Diary, which tells the story of a little girl and her Grandfathers matchbox diaries. They then went on to sing us a melody of the songs they had sung in their trip to Young Voices. Well done Tiger Class you spoke very clearly and sang beautifully.



## Biggest Ever Girls Football Session

Impact proudly took Lunsford Primary School to the Biggest Ever Girls Football session at Aylesford FC on Friday 7th March.

During the morning there were many drills and matches that took place, the girls kept very active and although feeling exhausted by the end of the session the girls maintained their performance and behaviour, which reflected Lunsford's high standards.

Lily D (Koala Class) showcased her talent throughout the morning with an impressive three hat-tricks taking Lunsford into the lead on many occasions however, this could not have been achieved without the support and encouragement from her team mates.

There were multiple schools that attended the session however, there was one person who notably stood out from the P.E leads and coaches and this was Isla R (Tiger Class) who exhibited exceptional sportsmanship, consistently helping her teammates and others back on their feet.

It was a fantastic event for the girls to have access to, improve their skills and make new friends and it was a joy for Impact to have the pleasure in taking the team.

Well done girls, bring on the next one!



## World Book Day and beyond....

On Thursday 6th March Lunsford joined in with World Book Day, the children looked amazing in all their costumes which included Paddington, Super Heros, Mario, Pirates, Harry Potter and Minecraft characters. A shout out goes to the staff who dressed up as Mr Men and Little Miss characters. Thank you to everyone who took the time to arrange costumes for the day.



During the week the Infants had a visit from Belinda Prescott and Lois Underdown who told all the children about their Mindful Bee book.

Koala, Tiger and Zebra Classes were lucky enough to have a visit from an author, Ella Dove.

Ella is the daughter of our very own Mrs Dove and her first children's book 'How To Roller Skate With One Leg' has just been published.



The children got to hear all about how Ella's experiences as an amputee inspired her main character. Maya and had the chance to ask lots of questions.

Well done to all the children for listening so well and demonstrating all our school values.

Ella's book is out now and is available on Amazon or in book shops. We also have a few signed copies in our school library.

Finally during the week, we had a bookshop in school, thank you to those who came and purchased books the total sales were £679.77 and we have therefore raised £271.91 which will be used to purchase books for the school library.

A huge thank you to Miss Graves and all the staff team for one amazing week.

**LUNSFORD  
PRIMARY  
EASTER DISCO**

**FRIDAY 28TH MARCH 2025**



GLOW STICKS  
£1.00  
PRE ORDER  
ON ARBOR

£2.50  
INCLUDES A  
DRINK &  
SNACK

**INFANTS 5.15PM - 6.15PM**  
**JUNIORS 6.30PM - 7.30PM**

**TICKETS AVAILABLE FROM THE ARBOR SHOP**

Have you purchased your son or daughter's Easter Disco tickets /Glow Sticks, deadline for purchasing is 24th March.

**New for the Easter Disco —  
Face paint tattoos**

FoLS will be at the Easter disco from 5pm offering Face paint tattoos, these have to be ordered in advance. Please order via the Arbor School Shop.

**Friends of Lunsford School  
News**

**Mother's day Tea and Cakes**

Places are selling out fast (we are sold out for Friday 28th March ) for our Mother's day Tea and Cakes. If you would still like to book a place please go to the School Shop section of your Arbor account to book (bookings close 18th March at 12pm).

**Life Saving Course**

Don't forget to book for the Life Saving Course 3rd April 6.30pm in the school hall (book via fols2016@outlook.com. Please note this session is for **adults only**, we are looking into offering a child friendly session—watch this space

**Easter Raffle**

Shortly we will be holding an Easter raffle, further details to follow.

**Fund raising for the Playground**

Current total raised so far is £10452



### **Kent Messenger My Mum 2025**

The Infant children of Lunsford Primary School have taken part in the Kent Messenger's "My Mum", the special supplement will be available to purchase during the week 24th— 28th March.

## Science Week

This week was science week and the theme this year was 'Adapt and Change'. We started off the week with a science assembly led by Miss White, our science lead. On Tuesday we had Fiona from 'Fun Science' in for a whole school science show. Fiona did 3 different experiments and told us about an exciting new after school club she will be running on a Wednesday! Year 6 had an 'Evolution' workshop led by the Natural History Museum, which was very fun and insightful. All classes had the opportunity to carry out their own practical science experiment as well as conduct their own research about a famous scientist.

Finally, we announced our 6 winners for the science poster competition. This was such a difficult decision as the posters were all absolutely amazing and the children had put so much thought, effort and creativity in them. All children got to show their posters in our celebration assembly and we awarded our 6 winners their prizes. Thank you to all those that took the time to create a poster.

## Reminders

### Parental Consultations

Thank you to all those who have booked their Consultation. If you are not able to make the afternoon / evening please contact your child's teacher directly to arrange an alternative date.

### Tiger Class secondary School visits

As we are fast approaching the time of year when Tiger Class children start to attend Secondary School open events, please let the office know if your child is attending an open day during the school day and if it is a morning session and you are going straight to the Secondary school please advise if they require a school dinner.

## Lauren - Little Princess Trust

You may recall last newsletter we told you about Sam (Tiger Class) donating his hair to charity. Well Lauren (also Tiger Class) mum got in touch to say at the start of the half term Lauren had 16 inches cut off her hair for the Princess Trust. Well done Lauren what a lovely thing to do.

Don't forget if your child is taking part in Charity events please email details with photos to the school office. We would be very happy to include them in future newsletters.



## Understanding emotional regulation

Bower Grove are hosting another Connections Guided Talk about 'Understanding Emotional Regulation' on Friday 21st March, 10am to 11:30am. The session will cover what emotions are, how they present in children and strategies to support. It will be run by Sasha from NEFT and Rebecca Dowling.

You can join in person or via Teams. Please book yourself a free slot by calling 01622 726773 or emailing [psg@bower-grove.kent.sch.uk](mailto:psg@bower-grove.kent.sch.uk).

**BOWER GROVE SCHOOL**

# UNDERSTANDING EMOTIONAL REGULATION

Understanding emotions      How it can present in children      Strategies to support

**Date:** Friday 21st March  
**Time:** 10 - 11:30am  
**Location:** Bower Grove school  
**Presenters:** Sasha Pay from NEFLT and Rebecca Dowling

Attend in person or online

**SIGN UP NOW**  
EMAIL: [psg@bower-grove.kent.sch.uk](mailto:psg@bower-grove.kent.sch.uk)  
TEL - 01622 726773

CONNECTIONS

## Junior Bake Off applications are now open

Is your son or daughter a whizz in the kitchen?

**JUNIOR BAKE OFF**

**JOIN THE CLASS OF 2025!**

**JUNIOR BAKE OFF**

... IS LOOKING FOR BRILLIANT BAKERS, AGES 9-15 FOR THE NEXT NEW AND EXCITING SERIES!

**APPLICATIONS CLOSE SUNDAY 23RD MARCH**

**APPLYFORJUNIORBAKEOFF.CO.UK**



# USEFUL INFORMATION

## PARKING



To ensure that all children arrive in school safe and well please park considerately and safely. If at all possible park a little way away and walk in. No parking within the school grounds at any time, without permission.



**NO**

## SMOKING

Do not forget this is a smoke free site, and that also includes no vaping.

## DOGS



Please do not bring dogs onto the school site (this includes the driveway), as we have children who become distressed when they are near a dog.

## OFFICE HOURS

8.15am - 4.00pm

In case of emergency a message can be left on 01732 843352



## SCHOOL OPENING HOURS



In the mornings the school grounds are open to parents and children from 8.20am

In the afternoon the school grounds are open from 2.50pm

We ask that all parents adhere to these time for the safety of the children.

## MEDICAL APPOINTMENTS

Please notify the school in writing at least 24 hours in advance if your child has a medical or dental appointment and is likely to return to school part way through the day, so that we can provide you with a pupil pass. If your child will miss morning registration and requires a school dinner on that day, you will need to let the office know in advance so that a dinner can be pre-ordered.

If at all possible please arrange medical appointments outside of school hours.

## Lunsford Primary School

Swallow Road  
Larkfield  
Aylesford  
Kent ME20 6PY

Phone: 01732 843352  
E-mail: [office@lunsford.kent.sch.uk](mailto:office@lunsford.kent.sch.uk)



## Stay well

Guide to help you choose the right service for you and your NHS



### Self-care

Hangover.  
Cough. Colds.  
Grazes. Small cuts.  
Sore throat.



Self-care is the best choice to treat minor illnesses and injuries.

A large range of common illnesses and injuries can be treated at home simply with over-the-counter medicines and plenty of rest.

### Pharmacy

Diarrhoea. Earache.  
Painful cough.  
Sticky eye.  
Teething. Rashes.



Pharmacists advise and treat a range of symptoms. This can avoid unnecessary trips to your GP or A&E department, and save time.

No appointment is needed and most pharmacies have private consulting areas.

### GP

Arthritis. Asthma.  
Back pain.  
Vomiting.  
Stomach ache.



GPs and nurses have an excellent understanding of general health issues and can deal with a whole range of health problems.

### Minor Injuries

Cuts. Sprains.  
Strain. Bruises.  
Itchy rash.  
Minor burns.



Minor Injuries Units, Walk-in Centres and Urgent Care Centres provide non-urgent services for a range of conditions.

They are usually led by nurses and an appointment is not necessary.

### A&E/999

Severe bleeding.  
Breathing difficulties.  
Severe chest pain.  
Loss of consciousness.



A&E or 999 are best used in an emergency for serious or life-threatening situations.

### NHS 111

If you're feeling unwell, unsure or if you want health advice and guidance for non-life threatening emergencies call NHS 111.



24 hours a day  
7 days a week

### NHS Choices

You can also access health advice and guidance or find your nearest service online through NHS Choices.



Visit [www.nhs.uk](http://www.nhs.uk)