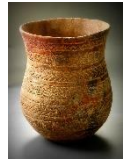


Lesson 5 Into the New Stone Age and the Bronze Age:



Can you make a model of a Bronze Age boat?

During this time early Britons had begun to live in small huts in settlements/ village groups as they learned to farm the land. But they also began to learn how to use clay to create storage pots, plates and cups.



They could also mix metals (Bronze) to melt down into tools and weapons.

As they began to need things that other people had learned to make, they began to 'trade' objects, to begin with by arranging swops, but later by exchanging coins – that's where the origins of the use of money began!

These early people began to trade with other countries and in Britain's case that meant you needed a boat!

We are fortunate that one of the oldest boats in the world was found near Dover. Look up the Dover Museum's website and ask your grown ups to help you understand a little bit about it.

<https://www.dovermuseum.co.uk/Bronzeat.aspx>

Try to find out:

- What the boat was made of
- How it was held together.
- Try to imagine what 'cargo' (objects that the traders wanted to sell) it was intended to carry?
- Would the boat have been rowed, or could they work out how to use a sail?

Write down a few facts about what you have found out, and you might like to draw a picture of the boat and its sailors too.

Go to the website of some Kent enthusiasts who are trying to make a life size model of the boat to test whether it actually would float. (Scroll down to see the photos later in the website)

<https://www.dover.uk.com/forums/dover-forum/the-bronze-age-boat>



Now for your main challenge!

Can you make a model of a Bronze Age boat that will actually carry a 'cargo' without sinking?

You will need a foil or plastic food /takeaway container to fill with water so that you can float your finished boat. Ask your parents' help to prepare an area to work, putting newspaper or a waterproof covering down first!

You can make your model boat out of plasticine, kitchen foil, model clay or paper or cardboard. You will need to problem solve to find out what shape works best.

(You are NOT allowed to use ready-make foil or plastic trays as boats, the idea is that YOU have to make something!)

Decide what your cargo will be – 10 raisins, 6 lego bricks, 20 safety pins etc – you choose.

Some helpful tips:

When I made a boat out of plasticine it sank immediately, I had to play around with the shape and make the sides thinner before I found the right boat shape that worked.

I also made a boat shape out of kitchen foil, but needed a big piece that I folded over four times so that it would be strong enough to carry a cargo.

I then had to find a way of folding it over tightly without using any sellotape, which would just come unstuck when wet.

Good luck! Do send photos of your finished triumphs!

XX Mrs Corner

A picture of the 3000 year old 'Dover Boat'



And then pictures of the working model, created in the last ten years.

