

# Lunsford Primary School



# Who's Who?



- \* Headteacher – Mr G Anscombe
- \* Deputy Headteacher – Mrs E Lomax
- \* SENCO – Mrs S Davies (Tues, Wed, Thurs)
- \* FLO – Mrs Katie Till
- \* Office Manager – Mrs K Mead
- \* Chair of Governors – Mrs Jacky Sharpe
- \* FOLS – led by Fiona Dalzell

# Open and Honest Communication



- \* “How can I speak to the SENCo if I have a concern?”
- We operate an open door policy and, whilst we always encourage you to talk to your child’s class teacher in the first instance, you can make an appointment to speak to the SENCo at any point during the year.
- Contact the school office to make an appointment to see me or ask if I can telephone you.
- You can also email me on [senco@lunsford.kent.sch.uk](mailto:senco@lunsford.kent.sch.uk)
- \* If it is appropriate, I will be available to review your child’s progress outside of whole school parents’ evenings.

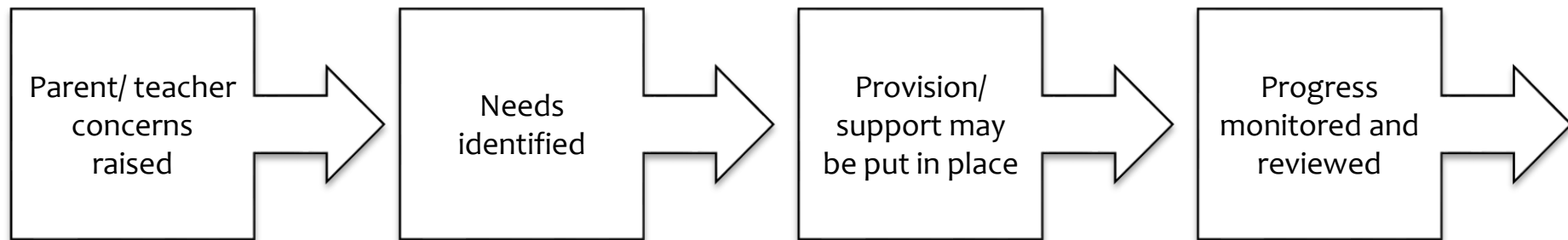
# Open and Honest Communication



**We will make all the information we need to share with you clear and easy to understand.**

- \* The SEN Information Report Policy explains how we identify and assess children who we think might have Special Educational Needs (SEN). If you prefer information on paper, please ask for a copy.
- \* Our governing body has a governor who is responsible for special educational needs. Her name is Mrs Jacky Sharpe.

**\* “What happens if there is a concern about my child?”**



# Open and Honest Communication



## Identification and assessment of Special Educational Needs (SEN)

- \* There are a range of methods used to identify Special Educational Needs which may include the following:
  - Parental concern
  - Pupil concern
  - Staff concern
  - In school data
  - External agency advice

# Appropriate and effective Teaching



**All school staff will receive appropriate training so they have the knowledge and confidence to support children's needs.**

- \* Teaching and support staff assess the level children are working at and differentiate the curriculum accordingly.
- \* We use a range of criteria and evidence to help us identify the level children are working at. This helps teachers to plan work for all children to make progress. The work and support will be different for individuals as well as different groups of children.



# Appropriate and effective Teaching



**We offer support through a variety of interventions that are matched to your child's needs.**

For example:

- Whole class differentiation – adapted tasks and resources
- Small group support
- 1:1 intervention

# Mental Health and Wellbeing



**This year, more than ever, your child's/children's mental health and wellbeing is a priority in our daily provision in school.**

During the course of the year, we are going to be implementing some new wellbeing initiatives and I welcome and encourage your feedback about what is best for your child/children.

If you are concerned about your child's mental health or wellbeing, please do not hesitate to contact me.



# A Partnership Approach

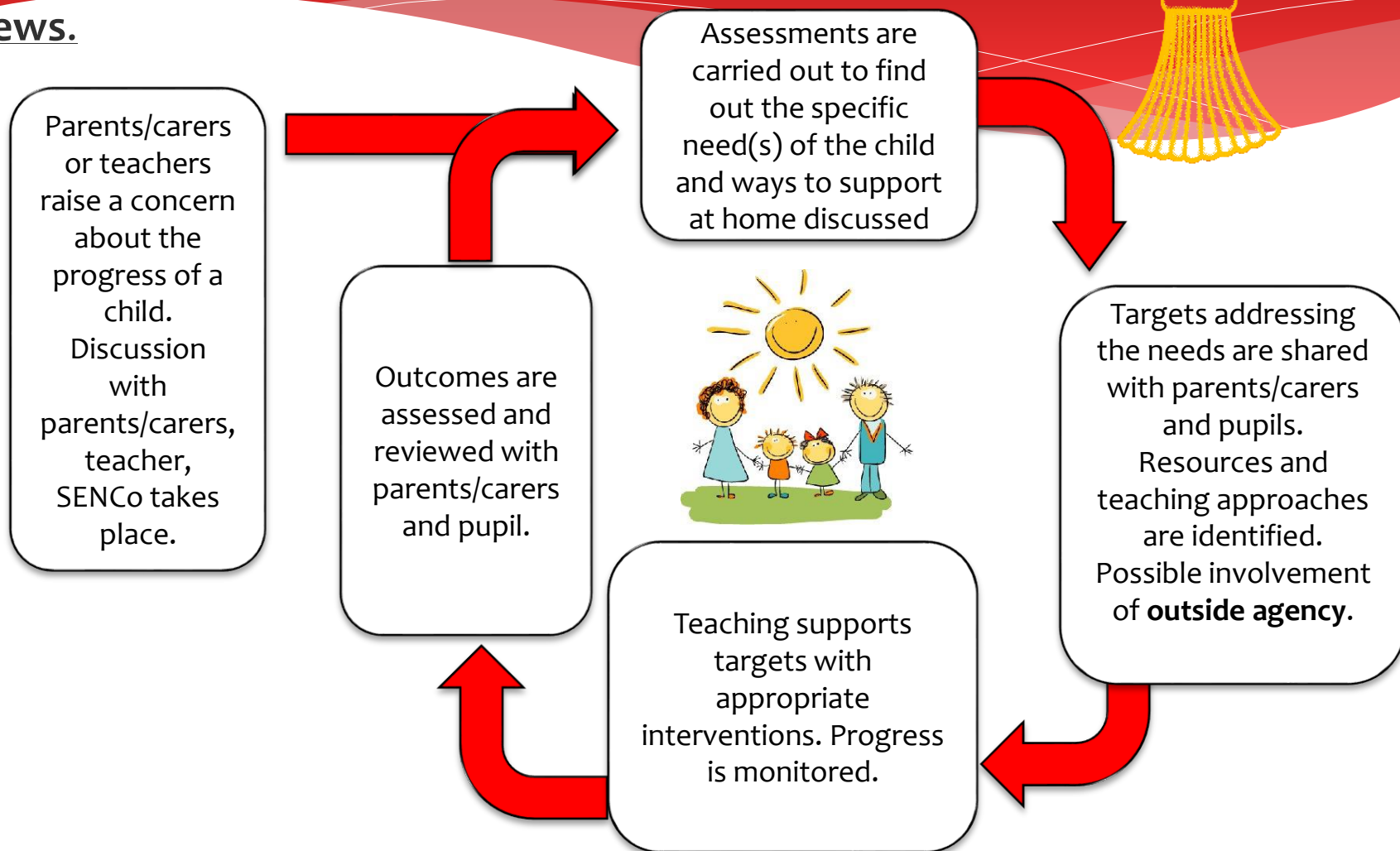


## How we work with you to identify your child's needs.

- \* We involve you in all decisions and listen to your views
- \* We involve your child in decisions about their learning
- \* We ask for your permission to involve other professionals to work with your child. The content of their involvement is confidential and is only shared with you and relevant staff
- \* We can support you in contacting organisations who can give advice and support

# A Partnership Approach

The school will involve you in all decisions and listen to your views.



# A Partnership Approach

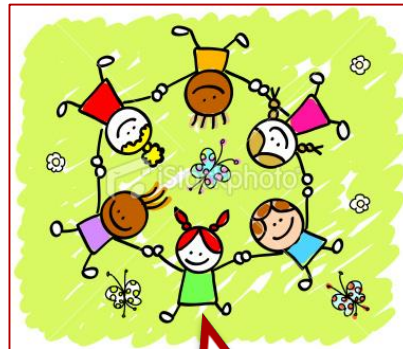
**The school will try to involve your child in decisions about their learning**



- \* Here are some of the things we do to make sure your child is listened to and are involved in decision making:

Parent visits  
in Reception

Children are  
involved in  
reviewing their  
progress.



Our  
voice!

Children can speak to  
any member of staff  
as well as their class  
teacher.

Children are involved  
in next steps in their  
learning through 'live  
marking'

# Getting in Contact



At Lunsford, we have an open door policy. We want to work in partnership with parents and carers and strive to achieve the best for all children.

We ask that if you have any worries or questions regarding your child or a problem related to school, please do not hesitate to come in to speak to us so we can understand your concerns and help to solve any issues . If we do not know there is a problem, it is very difficult for us to help you or your child.

If you feel that an issue has not been dealt with appropriately, please speak to Mr Anscombe or Mrs Lomax, or we will happily provide you with a copy of the formal complaints procedures.

# Getting in Contact



If you would like to speak to a member of staff...

- \* PLEASE ADD WHEN YOU WILL BE ON PLAYGROUND AND WHEN IS BEST TO SPEAK TO YOU
- \* Mr Anscombe or Mrs Lomax will be available on the playground every morning and afternoon.
- \* Our Family Liaison Officer (FLO) Katie Till can be contacted on 07833584920.
- \* Mrs Mead will forward on any emails and pass on any telephone messages.

# Any Questions?

- \* Look out for the updated SEN page on the school website soon!